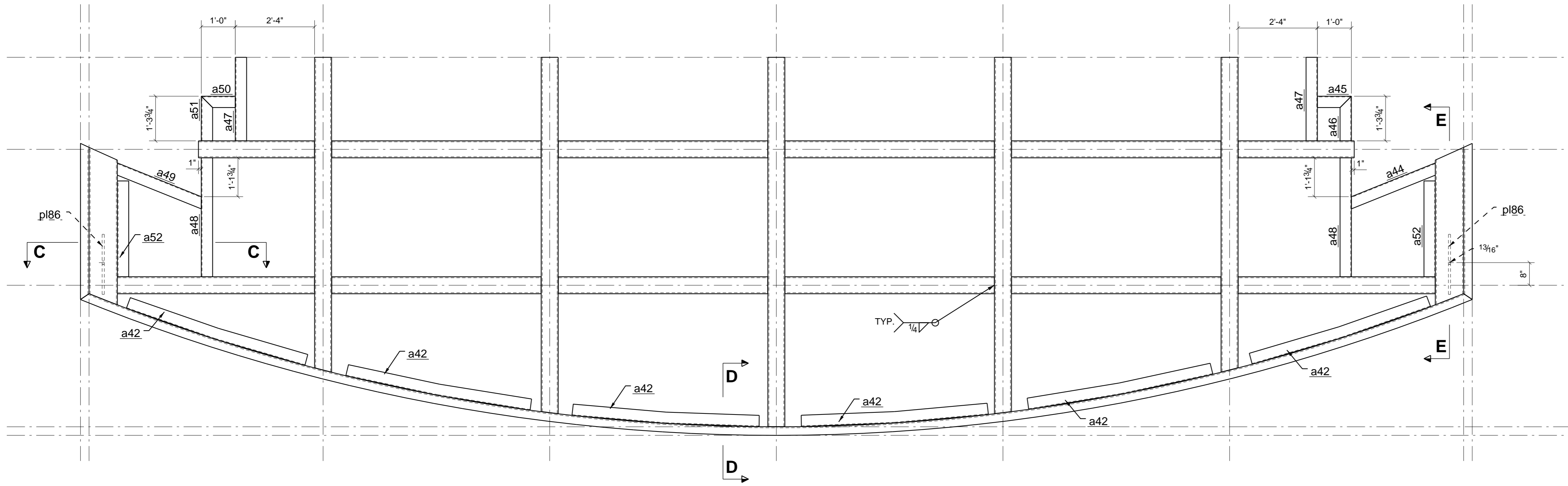


NOTES  
 1) CERTAIN HSS PART LENGTHS ARE 1/8" SHORTER THAN THE GAP THEY FIT INTO TO ALLOW FOR EASY FITTING

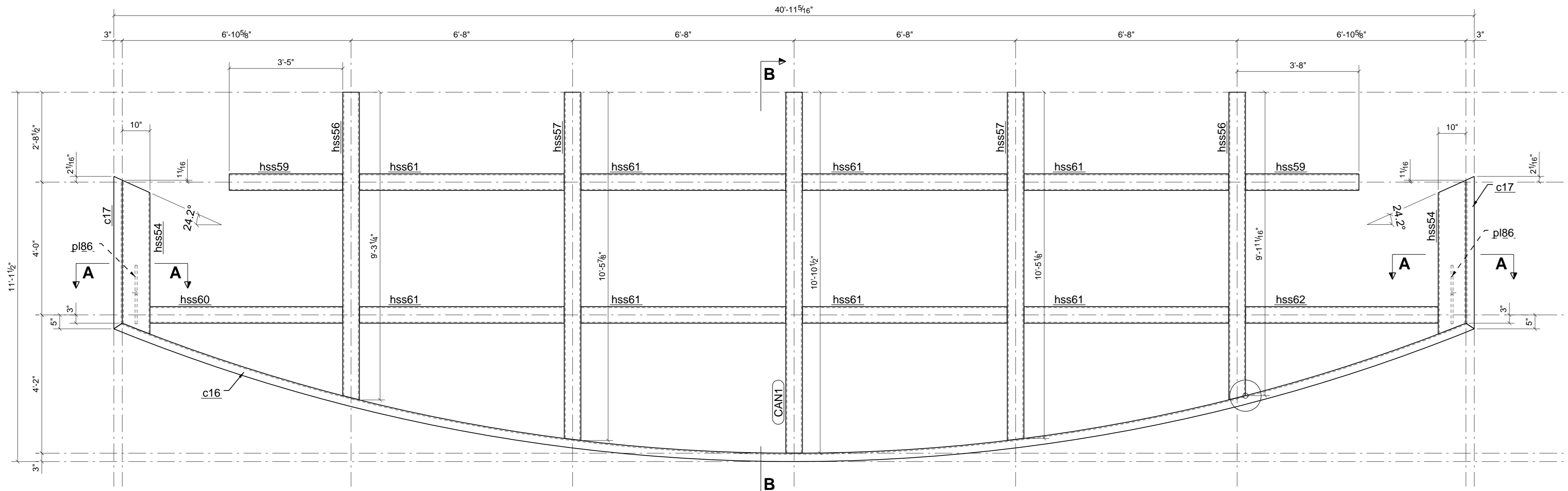
General Notes: Mark assembly at location shown in drawing  
 All holes are 13/16" diameter unless otherwise noted  
 All welds are 1/4" continuous fillet welds unless otherwise noted  
 1/2" Radius on all copes unless otherwise noted

**BILL OF MATERIAL**

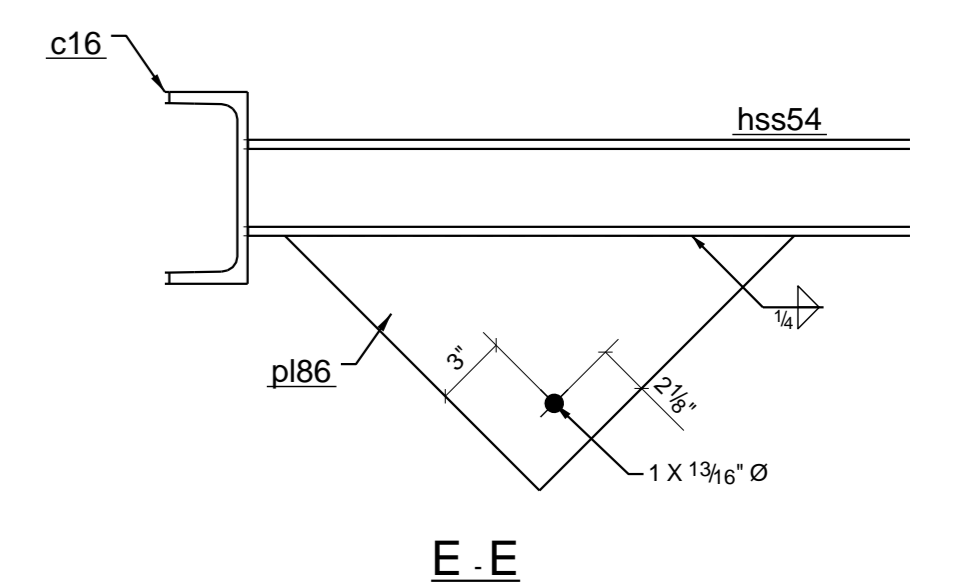
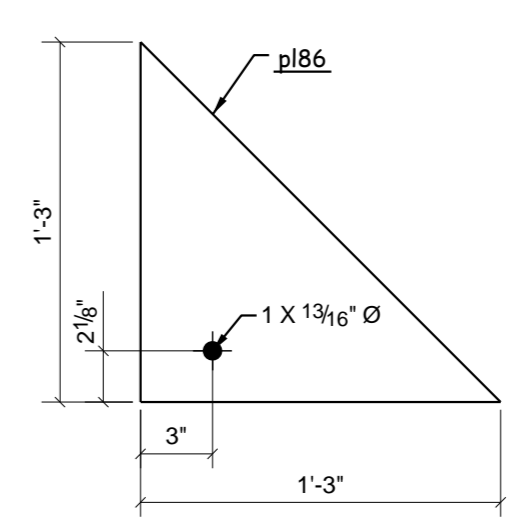
SHIP MARK	PIECE MARK	QTY	DESCRIPTION	LENGTH	REMARKS
CAN1		1	HSS6X6X3/8	10'-10 7/16"	SQ-2 A500-GR-B
	a42	6	L4X4X1/4	5'-6"	A36
	a44	1	L4X4X1/4	2'-9 9/16"	A36
	a45	1	L4X4X1/4	1'-0"	A36
	a46	1	L4X4X1/4	1'-3 3/4"	A36
	a47	2	L4X4X1/4	2'-5 1/2"	A36
	a48	2	L4X4X1/4	3'-6"	A36
	a49	1	L4X4X1/4	2'-9 9/16"	A36
	a50	1	L4X4X1/4	1'-0"	A36
	a51	1	L4X4X1/4	1'-3 3/4"	A36
	a52	2	L4X4X1/4	2'-9 13/16"	A36
	c16	1	MC8X20	41'-10 9/16"	A36
	c17	2	MC8X20	4'-7 1/8"	A36
	pl86	2	PL3/4"X15"	1'-3"	A36
	hss54	2	HSS10X4X3/8	4'-7 5/8"	A500-GR-B
	hss56	2	HSS6X6X3/8	9'-3 3/16"	A500-GR-B
	hss57	2	HSS6X6X3/8	10'-5 7/8"	A500-GR-B
	hss59	2	HSS6X6X3/8	3'-4 15/16"	A500-GR-B
	hss60	1	HSS6X6X3/8	5'-9 9/16"	A500-GR-B
	hss61	8	HSS6X6X3/8	6'-1 7/8"	A500-GR-B
	hss62	1	HSS6X6X3/8	5'-9 1/2"	A500-GR-B



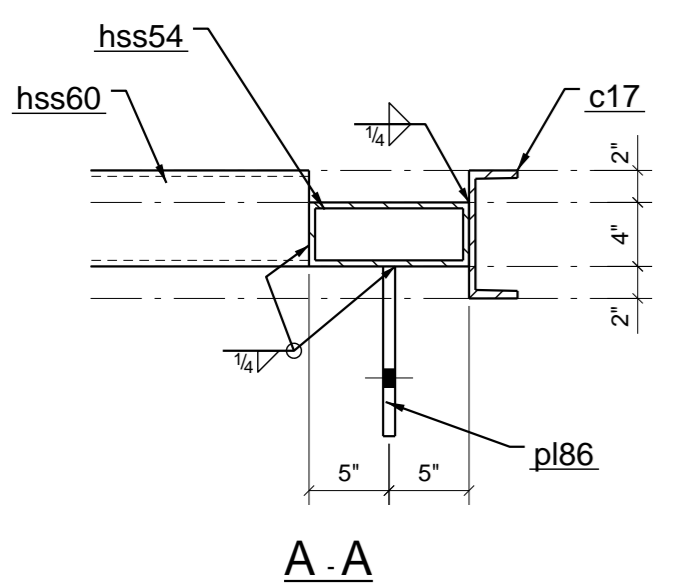
FRAME WITH ANGLES



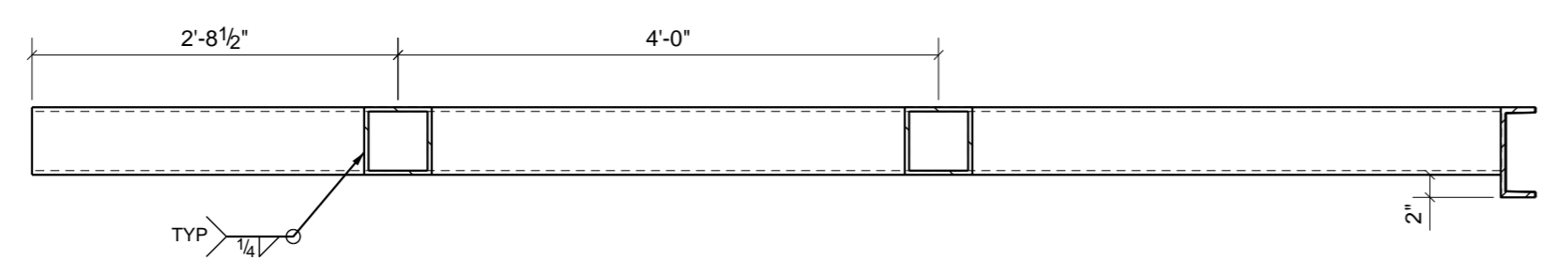
MAIN FRAMEWORK



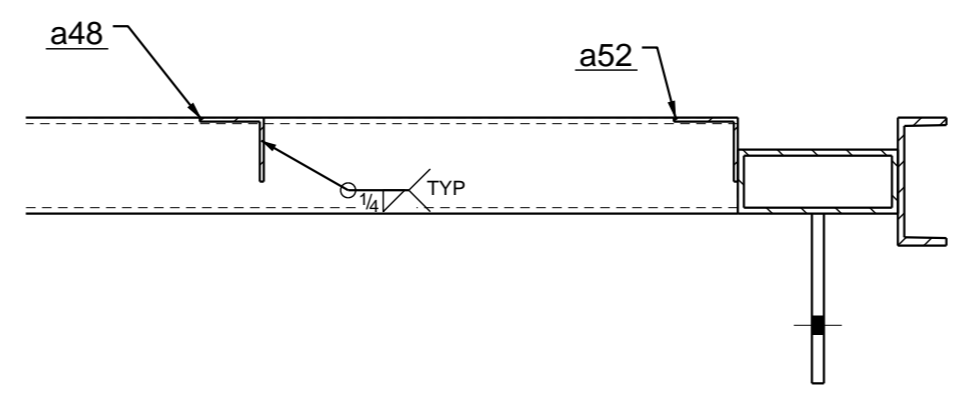
E - E



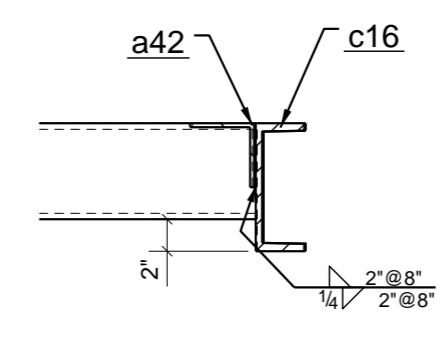
A - A



B - B



C - C



D - D

1 ~ BEAM ~ CAN1

REV	DATE	DESCRIPTION	BY
2	1/4/2008	FOR CONSTRUCTION	
OPEN HOLES: 13/16"      STD BOLTS: 3/4" A325 STD FINISH: PRIMER      STD WELDS: 1/4" FILLET ALL AROU			
<b>Steel Pro's</b> 1234 Industrial Ave 1 Lake Worth, FL 772-555-6200		ARCHITECT ArchiPro ENGINEER	
PROJECT NAME	STEEL BUILDING		
LOCATION	Someplace, FL 33023		
CONTRACTOR	ANGEL CONSTRUCTION		
DESCRIPTION	Entrance Canopy		
DRAWN BY	VIM	DRG No.	REV No.
CHECKED BY		(M) 14	2
PRINT DATE	01/21/2009		