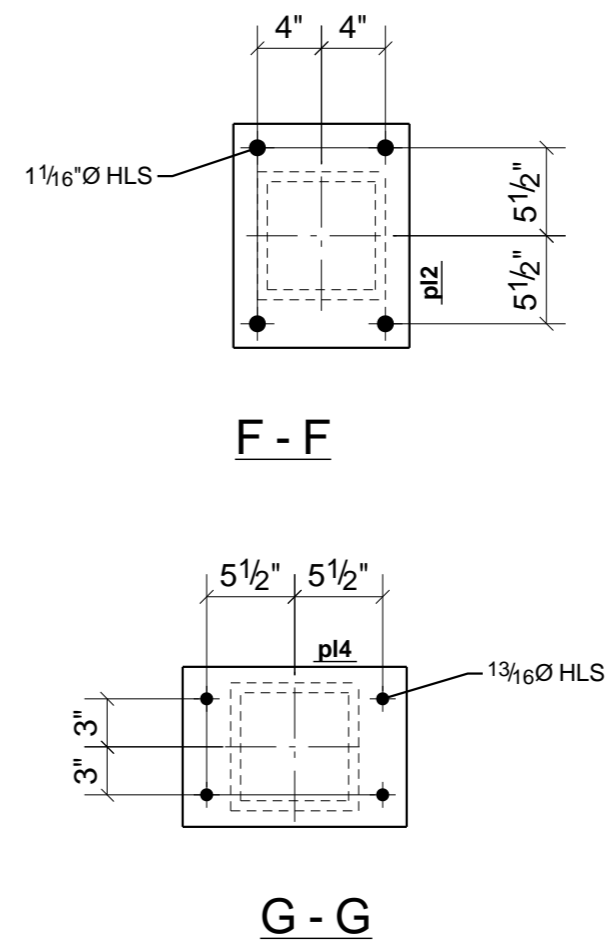
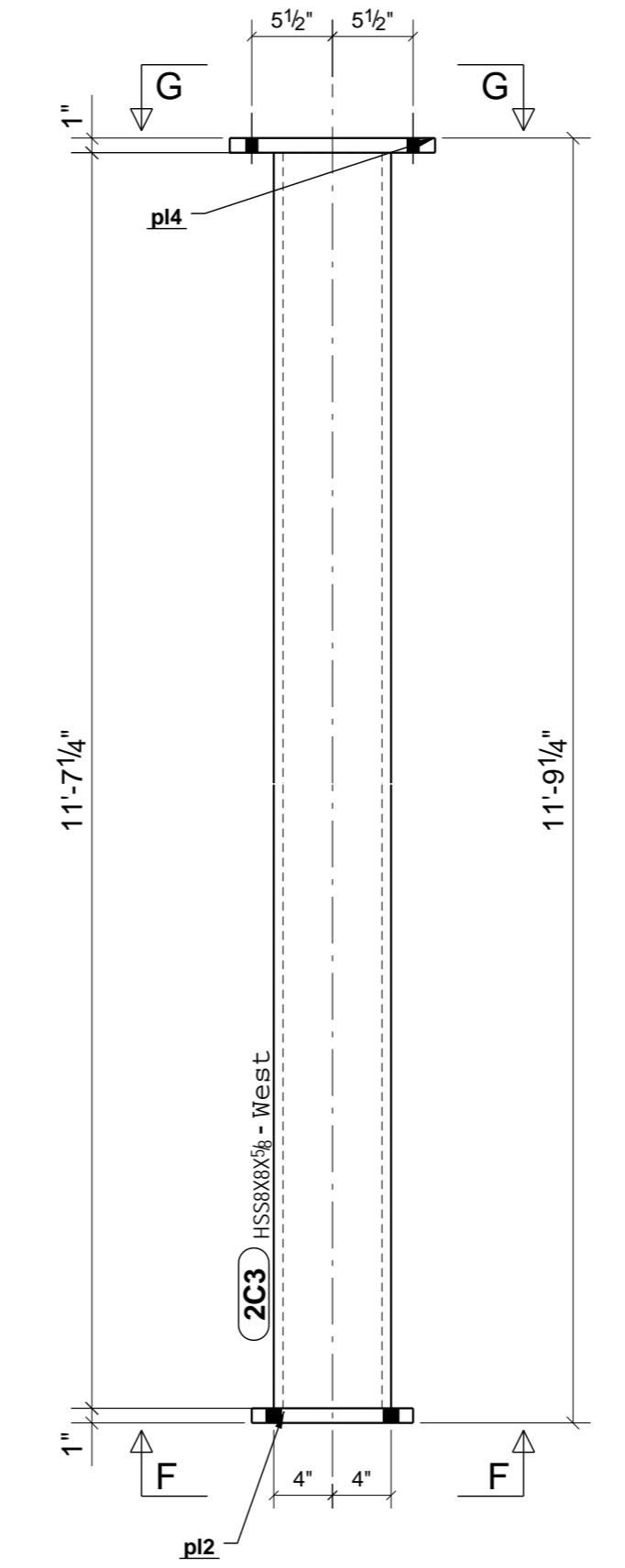
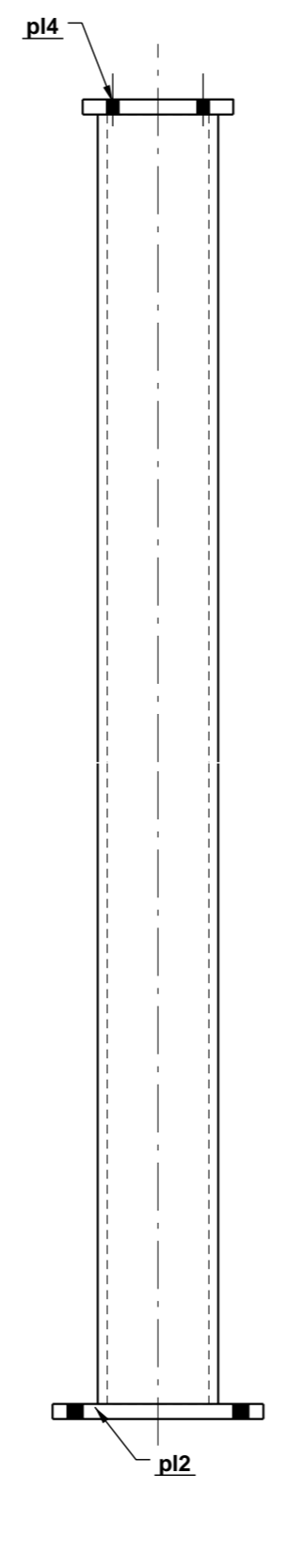
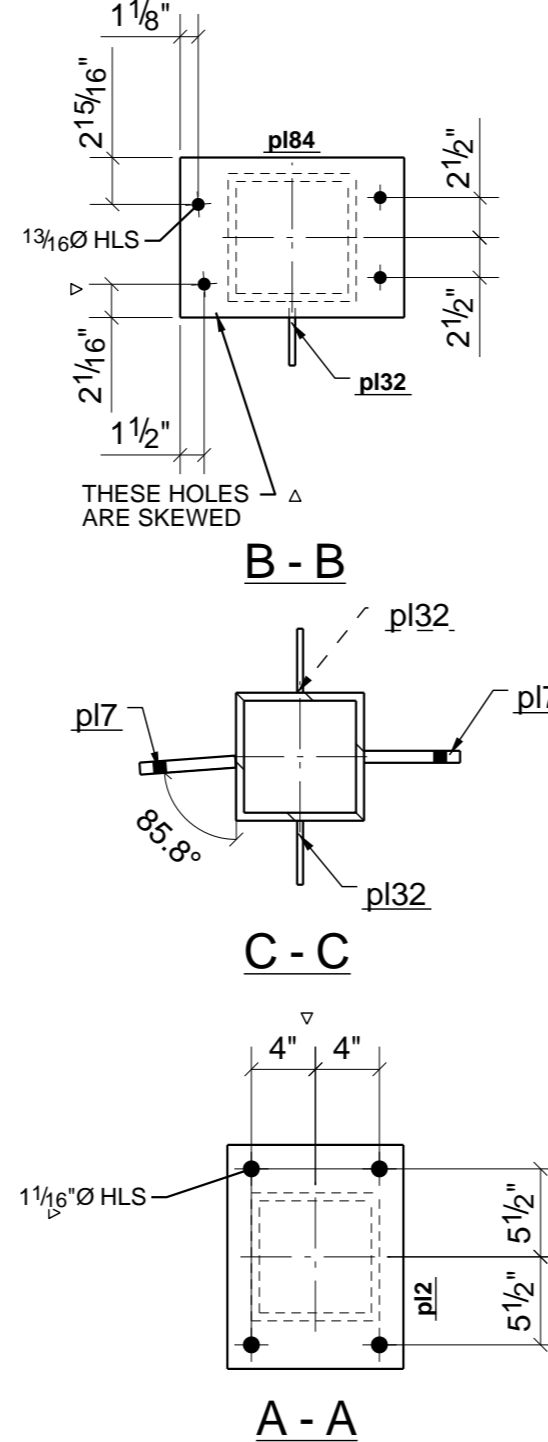
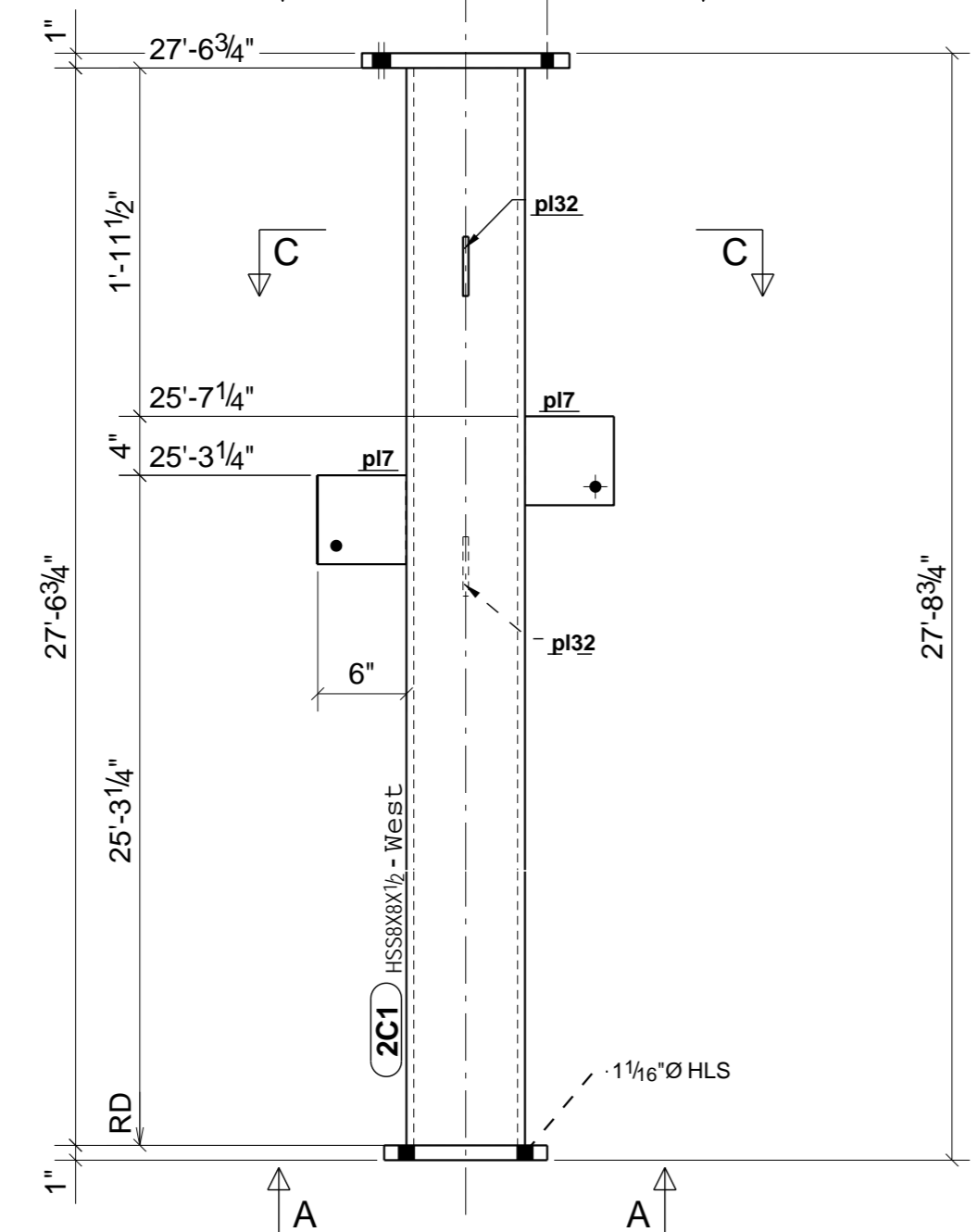
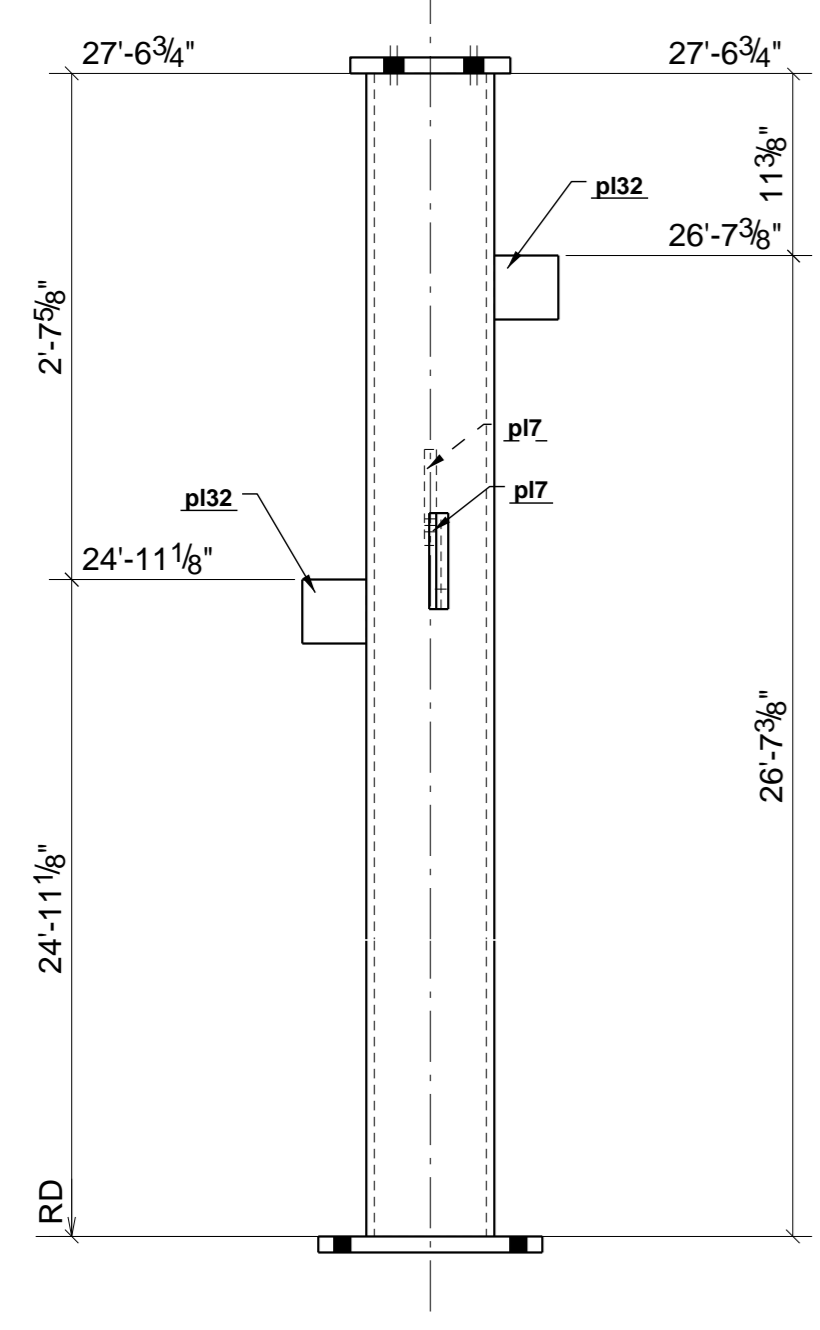


General Notes: Mark assembly at location shown in drawing  
 All holes are 13/16" diameter unless otherwise noted  
 All welds are 1/4" continuous fillet welds unless otherwise noted  
 1/2" Radius on all copes unless otherwise noted

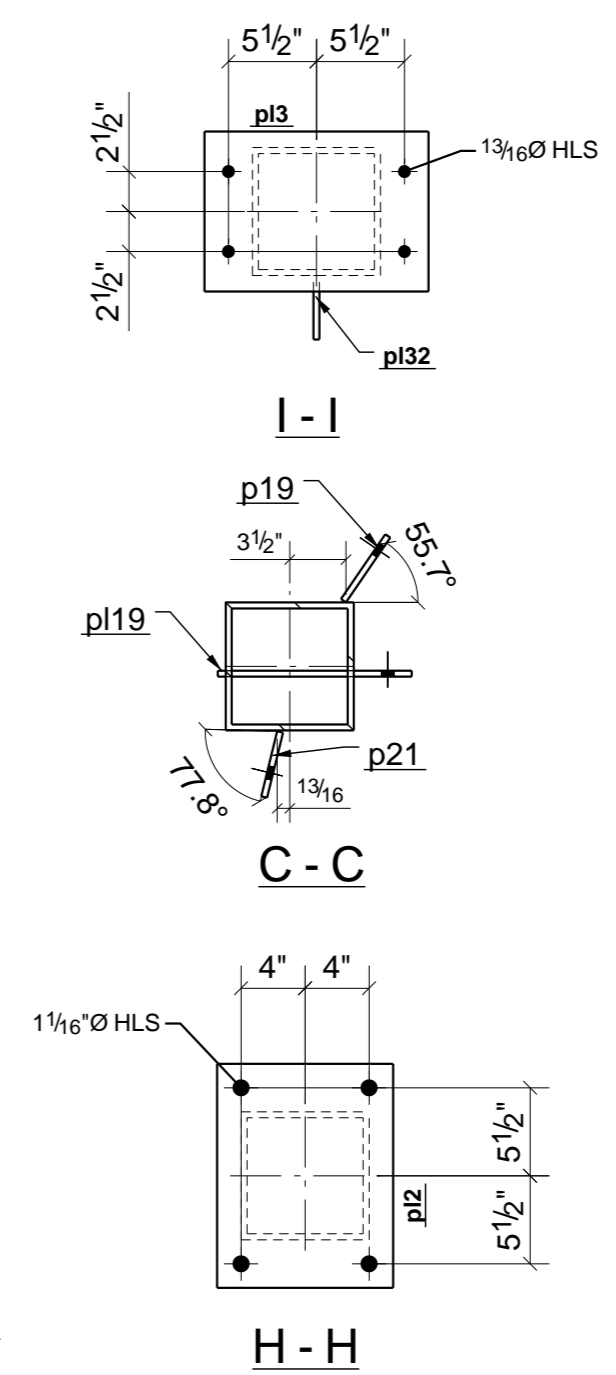
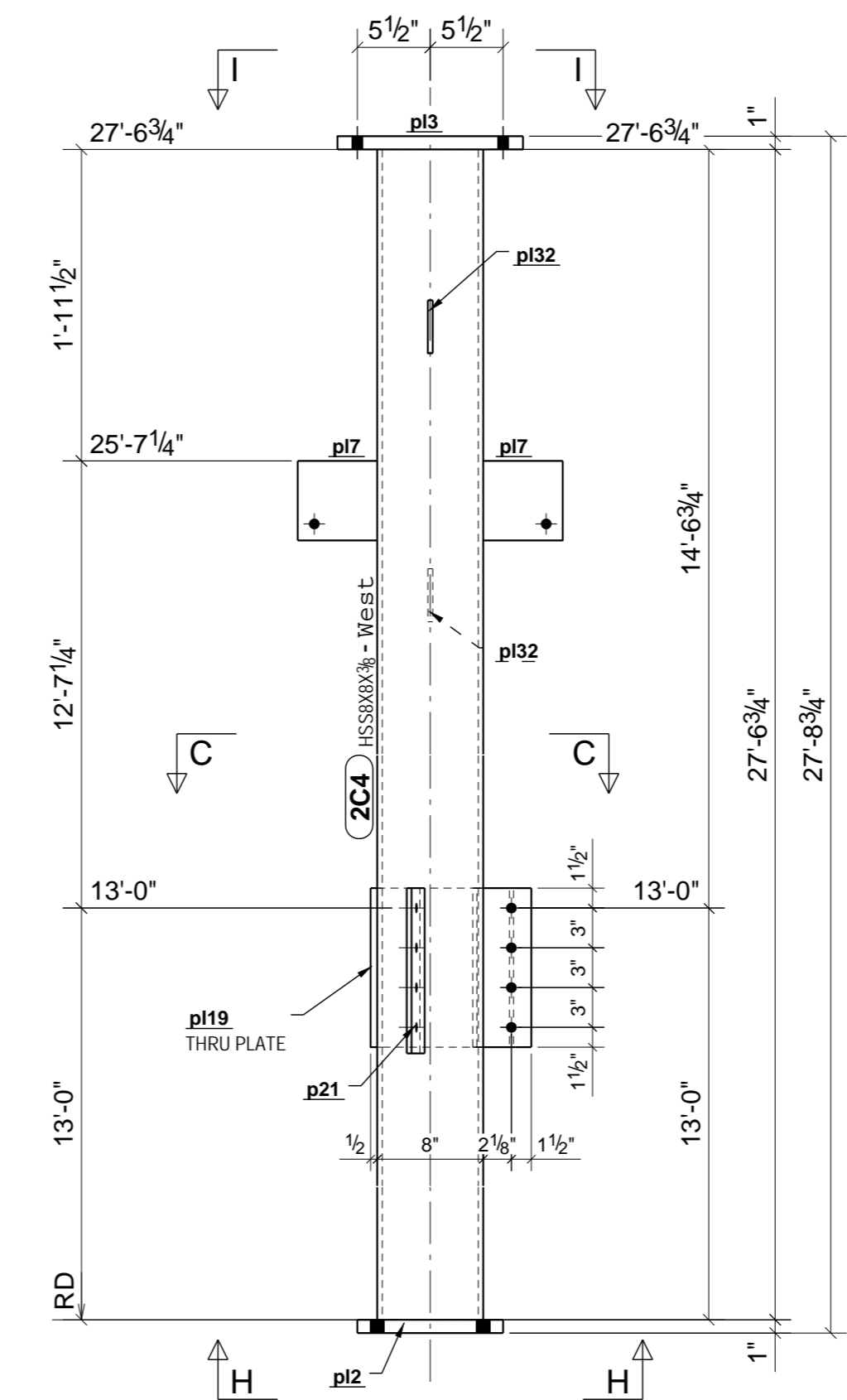
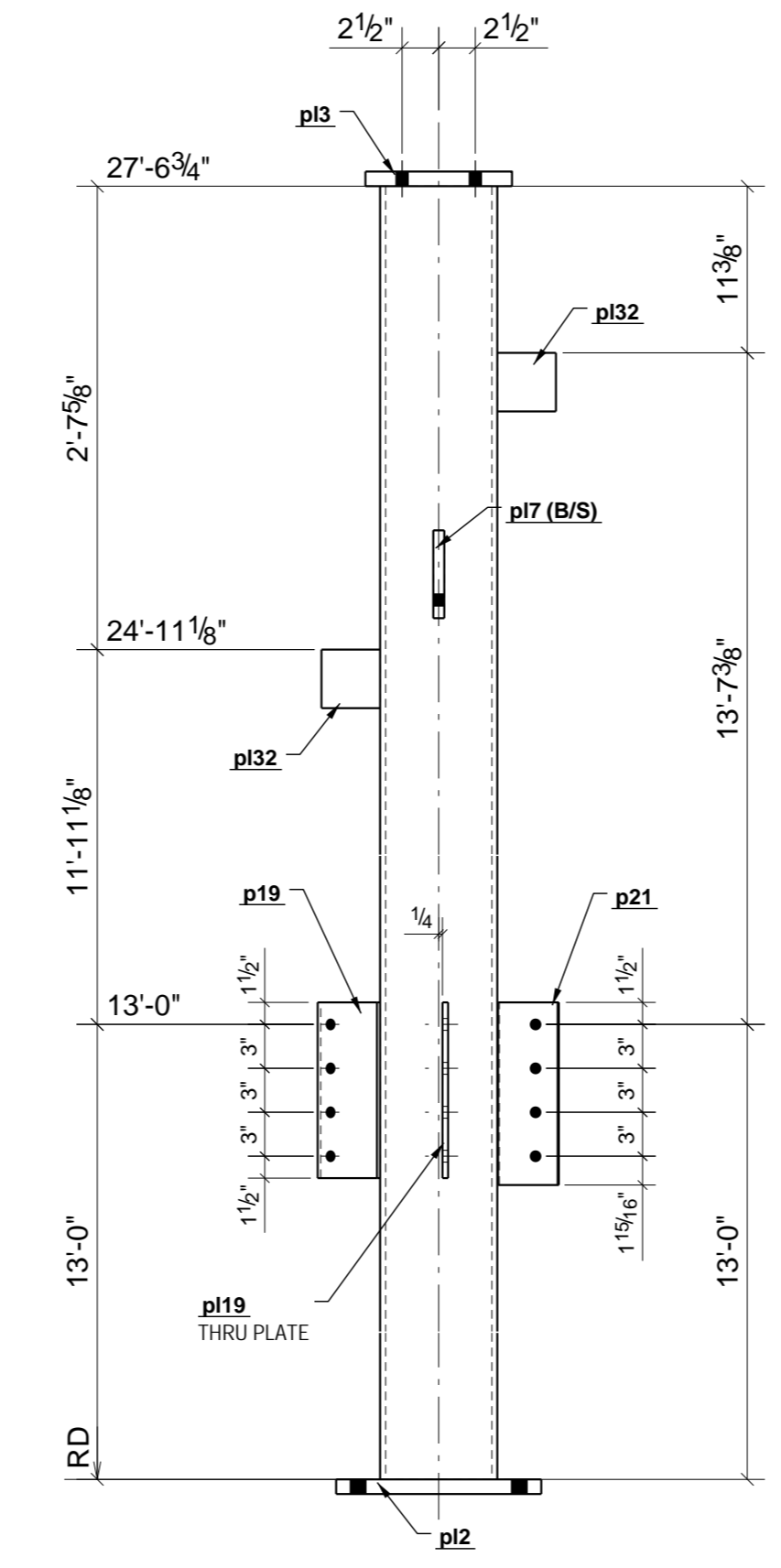
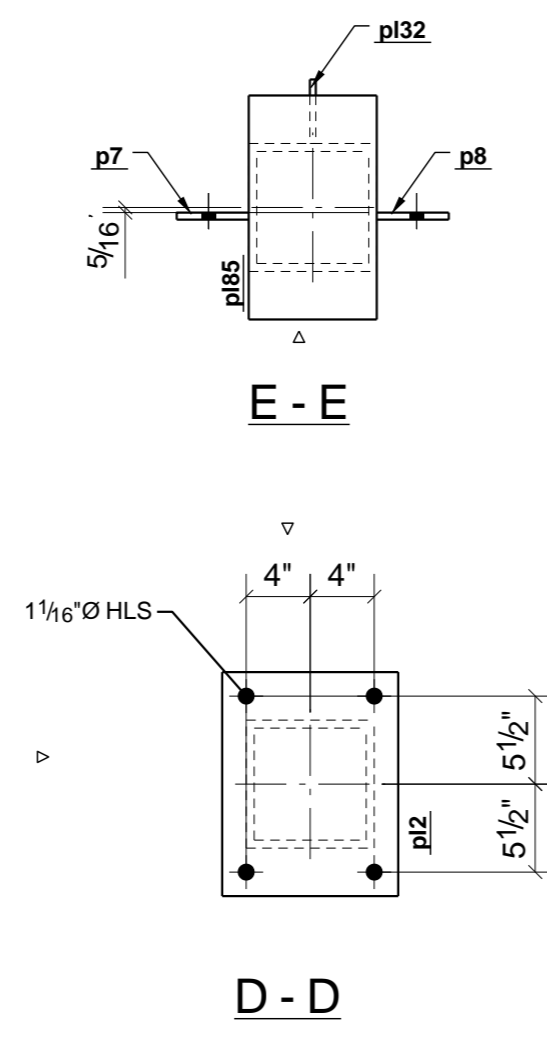
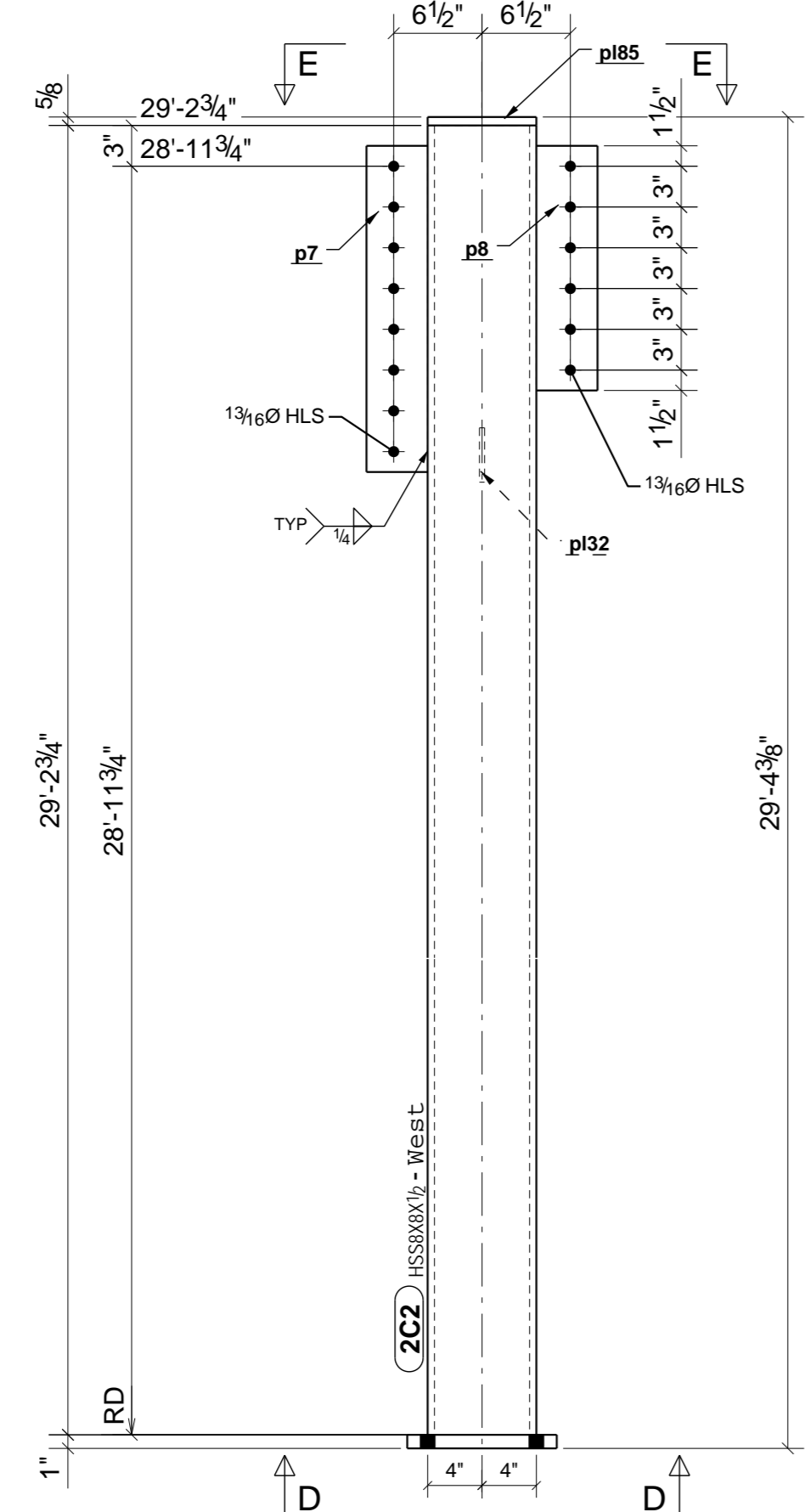
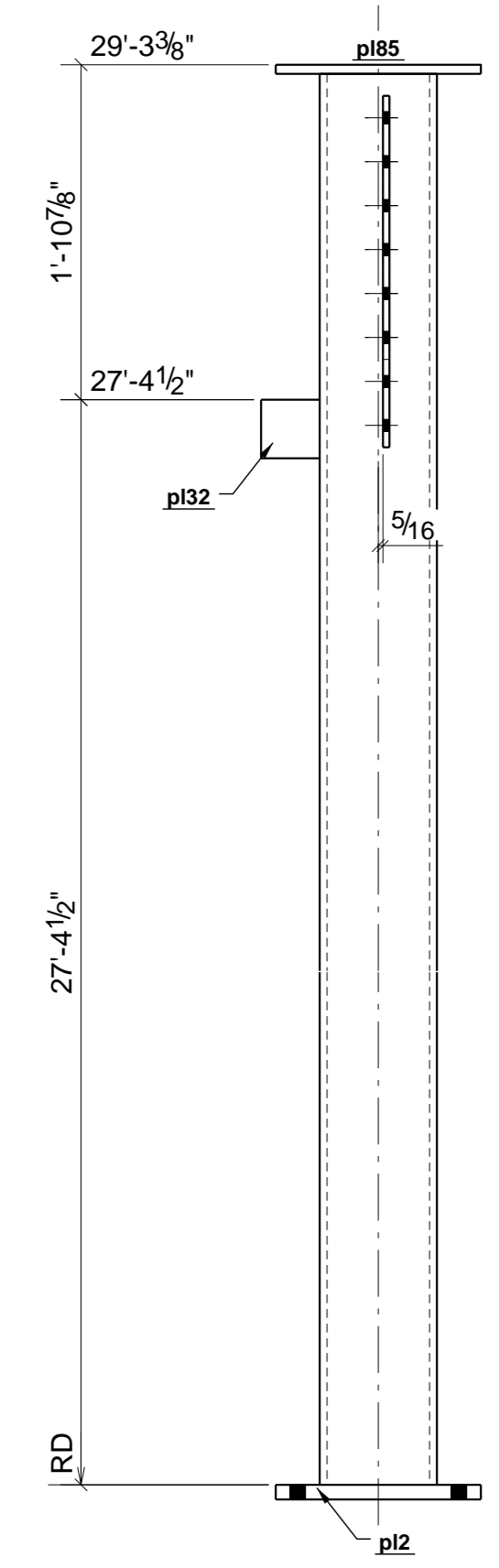
**BILL OF MATERIAL**

SHIP MARK	PIECE MARK	QTY	DESCRIPTION	LENGTH	REMARKS
2C1		1	HSS8X8X1/2	27'-6 3/4"	SQ-2 A500-GR-B
	pl2	1	FL1"X11"	1'-2"	A36
	pl7	2	FL3/4"X6"	0'-0"-6"	A36
	pl32	2	FL3/8"X4"	0'-0"-4"	A36
	pl84	1	FL1"X10"	1'-2"	A36
2C2		1	HSS8X8X1/2	29'-2 3/4"	SQ-2 A500-GR-B
	p7	1	FL7/16"X4 1/2"	2'-0"	A36
	p8	1	FL7/16"X4 1/2"	1'-6"	A36
	pl2	1	FL1"X11"	1'-2"	A36
	pl32	1	FL3/8"X4"	0'-0"-4"	A36
	pl85	1	FL5/8"X8"	1'-2"	A36
2C3		1	HSS8X8X5/8	11'-7 1/4"	SQ-2 A500-GR-B
	pl2	1	FL1"X11"	1'-2"	A36
	pl4	1	FL1"X10"	1'-2"	A36
2C4		1	HSS8X8X3/8	27'-6 3/4"	SQ-2 A500-GR-B
	p19	1	FL3/8"X12"	0'-0"-4 15/16"	A36
	p21	1	PL3/8"X4 3/16"	1'-0 7/16"	A36
	pl2	1	FL1"X11"	1'-2"	A36
	pl3	1	FL1"X10"	1'-2"	A36
	pl7	2	FL3/4"X6"	0'-0"-6"	A36
	pl19	1	FL3/8"X12"	1'-0 1/8"	A36
	pl32	2	FL3/8"X4"	0'-0"-4"	A36



1 ~ COLUMN ~ 2C1

1 ~ COLUMN ~ 2C3



1 ~ COLUMN ~ 2C2

1 ~ COLUMN ~ 2C4

1/4/2008	FOR CONSTRUCTION		
REV.	DATE	DESCRIPTION	BY
OPEN HOLES: 13/16"		STD BOLTS: 3/4" A325	
STD FINISH: PRIMER		STD WELDS: 1/4" FILLET ALL AROUND	
<b>Steel Pro's</b>			
1234 Industrial Ave 1			
Lake Worth, FL			
772-555-6200			
PROJECT NAME		STEEL BUILDING	
LOCATION		Someplace, FL 33023	
CONTRACTOR		ANGEL CONSTRUCTION	
DESCRIPTION		Columns	
DRAWN BY		VIM	
CHECKED BY			
PRINT DATE		01/21/2009	
		DRG No.	REV No.
		(M) 2	2